

Press release

Copenhagen, 08/07/2025

Everllence SE
Teglholmegade 41,
2450 Copenhagen SV,
Denmark

www.everllence.com

Group Communications
Nils Søholt
P +45 3385 2669
Nils.soholt@everllence.com

Everllence Celebrates 1,000th ME-GI engine; Milestone Unit goes to Hapag-Lloyd

Presentation to industry major marks low-speed milestone

At a ceremony at Hapag-Lloyd's headquarters in Hamburg, Dr Uwe Lauber, CEO of Everllence, presented Hapag-Lloyd's CEO, Rolf Habben Jansen, and Managing Director Fleet, Silke Lehmköster, with a plaque commemorating the company's order for an Everllence B&W ME-GI dual-fuel engine – the 1,000th ME-GI ever ordered by the market. The engine, a 7G95ME-GI type, is bound for a container vessel currently under construction at Jiangsu New Yangzi Shipbuilding Co., Ltd. where it is designated as hull #1721.

Habben Jansen said: "We are proud to mark this milestone with our partner, Everllence. The order for the 1,000th ME-GI engine reflects our commitment to decarbonising global supply chains. Dual-fuel technologies like the ME-GI are a key step on our journey to a low-emission fleet and support our ambition to drive change across the industry."

Dr Lauber said: "Considering that the strongest interest in the ME-GI engine has come from the container segment, it is fitting that this significant milestone should be reached with an order from such a prestigious container player as Hapag-Lloyd. On the path to net-zero, the marine industry needs pioneers and Hapag-Lloyd is leading the way by example."

Lauber continued: "2025 has seen a large increase in ME-GI orders as methane makes for an excellent transition fuel on the way to decarbonising shipping. The ME-GI's market-leading efficiency and technological maturity – as well as lowest methane slip – have confirmed its status as the marine industry's default, dual-fuel, methane-fuelled engine."

The ME-GI engine was originally introduced in 2014, since when it has been broadly accepted by all marine segments.

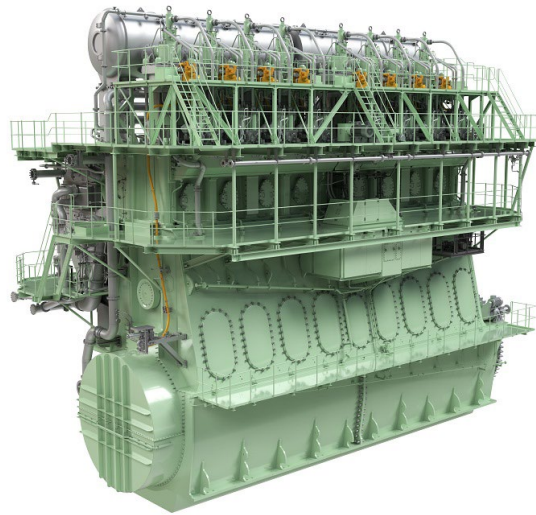
Everllence

About Hapag-Lloyd

With a fleet of 308 modern container ships and a total transport capacity of 2.4 million TEU, Hapag-Lloyd is one of the world's leading liner shipping companies. In the Liner Shipping segment, the Company has 14,000 employees and 400 offices in 140 countries. Hapag-Lloyd has a container capacity of 3.7 million TEU – including one of the largest and most modern fleets of reefer containers. A total of 135 liner services worldwide ensure fast and reliable connections between 600 ports on all the continents. In the Terminal & Infrastructure segment, Hapag-Lloyd has equity stakes in 21 terminals in Europe, Latin America, the United States, India and North Africa. 3,000 employees are assigned to the Terminal & Infrastructure segment and provide complementary logistics services at selected locations in addition to the terminal activities.



*Pictured at Hapag-Lloyd headquarters in Hamburg (from left): Dr Uwe Lauber, CEO Everllence; Silke Lehmköster, Managing Director Fleet at Hapag-Lloyd; and Rolf Habben Jansen, CEO Hapag-Lloyd
Photo courtesy: Hapag-Lloyd*



The ME-GI engine

Everllence (formerly MAN Energy Solutions) is a leading provider of propulsion, decarbonisation and efficiency solutions for shipping, the energy economy and industry. True to our motto – 'Moving big things to zero' – we help key industries in the global economy to reduce hard-to-abate emissions. Our technologies have a measurable impact on the success of the global energy transition. Headquartered in Germany, Everllence employs some 15,000 people at over 140 sites globally. Our after-sales brand, Everllence PrimeServ, also supports our customers through its worldwide service-centre network.