

Press release

Copenhagen, 26/08/2025

Everllence

Stadtbachstraße 1, 86153 Augsburg,
Germany

Postal address:
86224 Augsburg, Germany

www.everllence.com

Group Communications

Nils Søholt
P +45 3385 2669
nils.soholt@everllence.com

Mazagon Dock and Indian Coast Guard Place Record High-Speed Order

Total of 42 engines bound for Fast Patrol Vessels

Mazagon Dock Shipbuilders Ltd., based in Mumbai, India, has placed an order for 14 × 3 × 16V175D-MM high-speed engines from Everllence. The engines will power 14 Fast Patrol Vessels (FPVs) currently under construction for the Indian Coast Guard. The engines are all rated at 2,960 kW and scheduled for delivery from December 2025 to December 2027.

The FPVs will be equipped with waterjet propulsion systems and are designed to reach speeds exceeding 33 knots. They will be deployed for coastal surveillance, fisheries protection, search-and-rescue operations, and can also be used for military missions in times of crisis.

Ben Andres, Head of Sales at Everllence, said: "This project marks a major milestone for Everllence as we enter the Indian Coast Guard market – a highly strategic and demanding customer – and extend our long partnership with Mazagon Dock with another significant order. We are proud to be part of this collaboration, which not only strengthens our presence in the region but also highlights the trust placed in our 175D engine."

Waldemar Wiesner, Vice President, Head of Marine and PrimeServ Marine & Power, Middle-East/Africa at Everllence, said: "The 175D proved to be the right technical choice for this project. Close collaboration with Mazagon Dock's technical and commercial teams was key to securing this important contract. We are thankful to the Indian Coast Guard for its timely scrutiny of technical documents and technical clearance."

The new order follows closely on the heels of another major, Indian order that Everllence won in April 2025, that time from the Indian Navy when Hindustan Shipyard Ltd. ordered complete propulsion packages from Everllence for five newbuild Fleet Support Ships. Each scope of supply features 2 × 20V32/44CR engines.

About the 175D engine

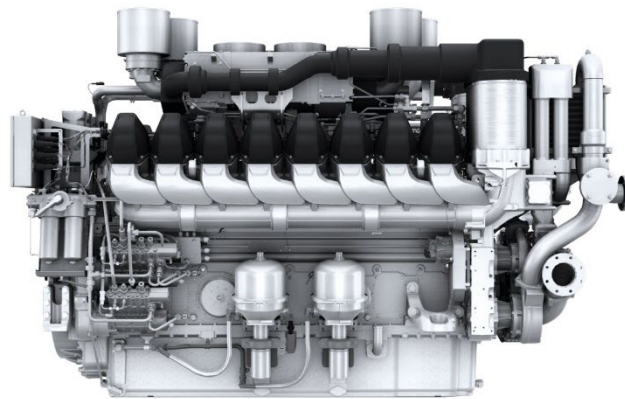
Everllence developed the 175D engine range to supplement and complete its product portfolio in the maritime sector.

Available in three variants of 12-, 16- and 20-cylinders, the engine is available with an output ranging from 1,500 to 4,400 Kilowatts and is optimised for propelling ferries, offshore support ships, tugs and other working vessels. Other market areas, such as superyachts, planing yachts and naval marine applications are also served by additional engine variants.

Everllence

The 175D is also an extremely eco-friendly engine, having been designed from the outset for low fuel-consumption, coupled with compliance to the latest exhaust-gas emission standards and considering as well future-fuel requirements where it is already cleared for operation on biofuels such as FAME and HVO.

Everllence



The Everllence 175D engine

Everllence (formerly MAN Energy Solutions) is a leading provider of propulsion, decarbonisation and efficiency solutions for shipping, the energy economy and industry. True to our motto – 'Moving big things to zero' – we help key industries in the global economy to reduce hard-to-abate emissions. Our technologies have a measurable impact on the success of the global energy transition. Headquartered in Germany, Everllence employs some 15,000 people at over 140 sites globally. Our after-sales brand, Everllence PrimeServ, also supports our customers through its worldwide service-centre network.