

Press release

Zurich / Oberhausen,
06/07/2026

Everllence Switzerland Ltd.
Hardstrasse 319, 8005 Zurich,
Switzerland

Postal address:
8005 Zurich, Switzerland

www.everllence.com

Group Communications
Roberto Rubichi
P +41 44 278 33 25
roberto.rubichi@everllence.com

Everllence compressors for FPSO project offshore Angola

Eight compressor trains to support new FPSO for Azule Energy

Everllence will supply a total of eight compressor trains for a new Floating Production Storage and Offloading (FPSO) vessel offshore Angola. The FPSO will be delivered by China's Yantai CIMC Raffles for the client Azule Energy, a joint venture between bp and Eni, marking Yantai CIMC Raffles' first complete FPSO project as EPCIC contractor. The project reflects the growing role of Chinese contractors in the global FPSO market, supported by expanding engineering capabilities and large-scale shipyard capacities.

The scope of supply includes four centrifugal compressor trains and four process gas screw compressor skids for gas processing and export applications onboard the FPSO.

Bolan Li, Head of Industries China at Everllence, says: "This first collaboration with Yantai CIMC Raffles represents a major step in strengthening our presence in the global offshore market. We appreciate the trust placed in Everllence's technology and FPSO experience and look forward to further cooperation opportunities in the future."

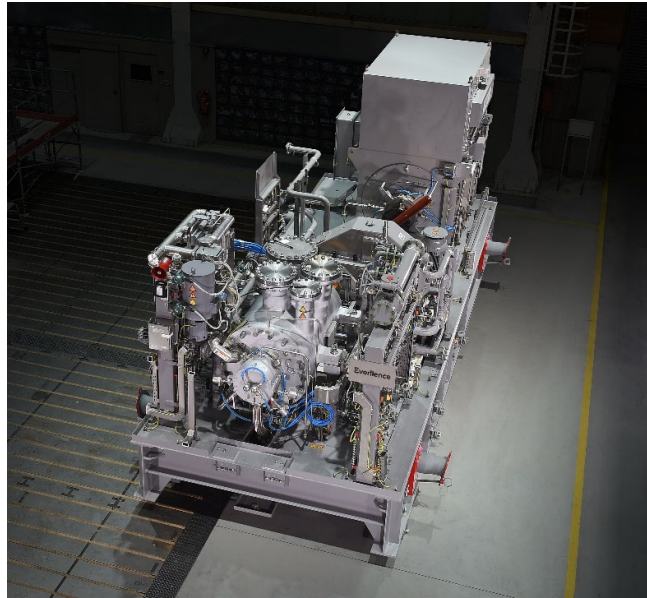
Holger Wörner, Head of Sales Upstream at Everllence, states: "FPSO projects place particularly high demands on reliability, efficiency and execution. With our proven compressor technology and extensive offshore experience, we are able to support customers with solutions tailored to demanding gas processing and export applications in dynamic operating environments."

The centrifugal compressor trains will be manufactured at Everllence's facility in Zurich, Switzerland. The scope includes three electrically driven export gas compressors and one high-pressure compressor. The compressor trains will be equipped with variable frequency drives (VFDs) to ensure operational flexibility and optimized process performance. The process gas screw compressor skids will be supplied from Everllence's Oberhausen facility in Germany. Each skid consists of two compressor units for gas processing applications.

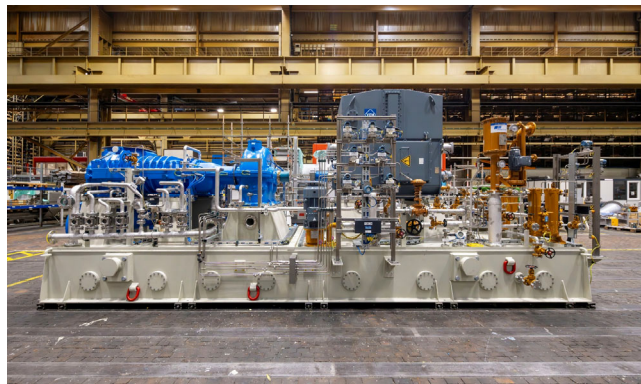
Dirk Wöckener, Head of Sales Screw Compressors at Everllence, adds: "This project underlines the versatility of our screw compressor technology for offshore gas processing applications. By combining engineering expertise with efficient project execution and advanced manufacturing capabilities, we can meet the specific requirements of large-scale FPSO developments."

Everllence

A Digital Convoy Package is included in the scope of supply to support operational transparency and lifecycle performance of the compressor systems. Delivery of the eight compressor trains is scheduled for May 2027.



A centrifugal compressor train type RB for offshore gas production by Everllence © Everllence



Everllence screw compressor for an FPSO vessel © Everllence

Everllence (formerly MAN Energy Solutions) is a leading provider of propulsion, decarbonization and efficiency solutions for shipping, the energy economy and industry. True to our motto - 'Moving big things to zero' - we help key industries in the global economy to reduce hard-to-abate emissions. Our technologies have a measurable impact on the success of the global energy transition. Headquartered in Germany, Everllence employs some 15,000 people at over 140 sites globally. Our after-sales brand, Everllence PrimeServ, also supports our customers through its worldwide service-center network.