

Proven oil filtration solutions for specific engine types, from our Omnicare service

# Smarter lube oil filtration



**Everllence**

**PrimeServ**

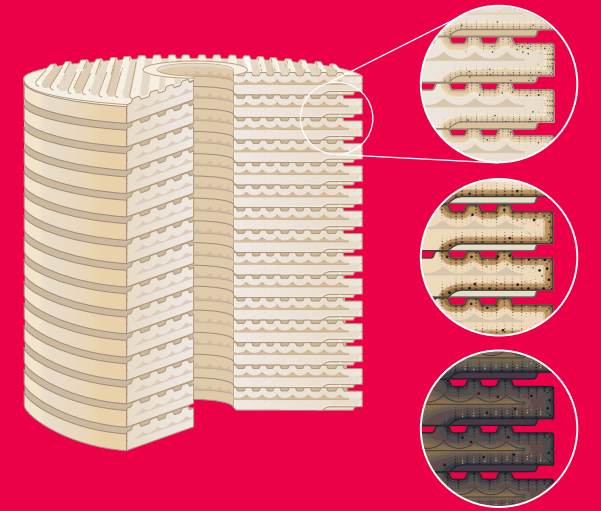


# Oil filtration systems from C.C.JENSEN gives you 97% energy (fuel) savings compared to a centrifugal separator

The global drive towards responsible shipping means our industry must find better ways to reduce its impact on the environment.

That's why, as part of our Omnicare service, we provide class-leading solutions that help to reduce fuel consumption, emissions, and waste, while improving OPEX.

Filtration units from C.C.JENSEN are designed to reduce energy consumption and prolong the life of your oil in a sustainable way. The filter elements are produced from environmentally sustainable, 100% natural cellulose fibers. The bonded discs' unique design creates a huge filtration area that ensures high efficiency.



## Fuel savings

Compared to a separator, a CJC® filter only requires 3% of the fuel. The majority of savings occur from heating the oil and spinning the motor on a centrifugal separator. For a centrifuge to be efficient, an oil temperature of 100-115°C must be maintained. Deviations from this range seriously impact the efficiency of the cleaning cycle.

**97%**  
saving

## Sludge reduction

With no oil loss during operation, sludge production is reduced to almost zero. Only a small amount is lost on element change. Substantial weight and space is saved on board by not having to transport the sludge back to port.

**99%**  
sludge reduction

## Specific lube oil consumption (SLOC)

Large savings in oil consumption drive down operating costs and further reduce environmental impact.

**40-60%**  
saving on 4-stroke engines

**10-20%**  
saving on 2-stroke engines





# Simple installation and maintenance

C.C.JENSEN filtration units are easy to maintain with no special skills required. Their robust design with very few moving parts minimizes the risk of mechanical failure.

On retrofit applications, it is common to leave the centrifugal separator in place but switched off.

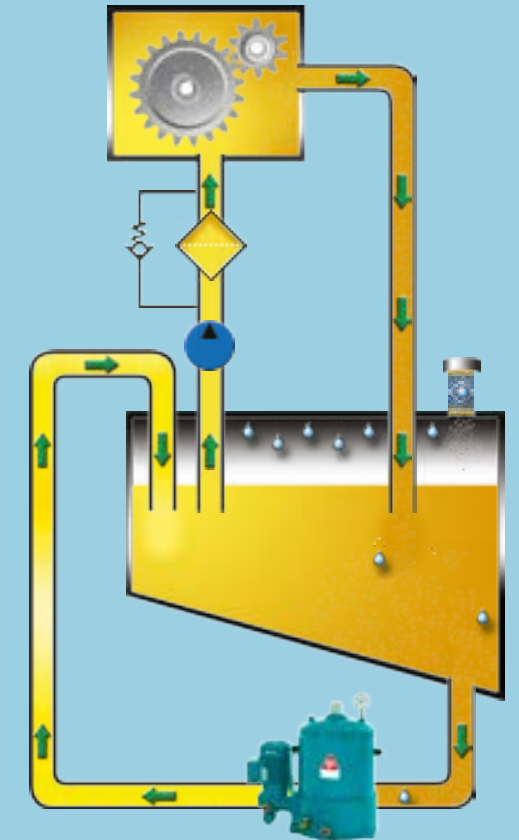
Common fault alarm output is available in case of pump stoppage, oil leaks, or related problems.

The cleaning period after the first installation might require an additional one or two sets of filter elements for the first year. This is dependent on the state of the oil on startup.

The offline system does not require a main system shut-down for maintenance or filter changes. Installation and maintenance are simple; no special tools or skills are required.

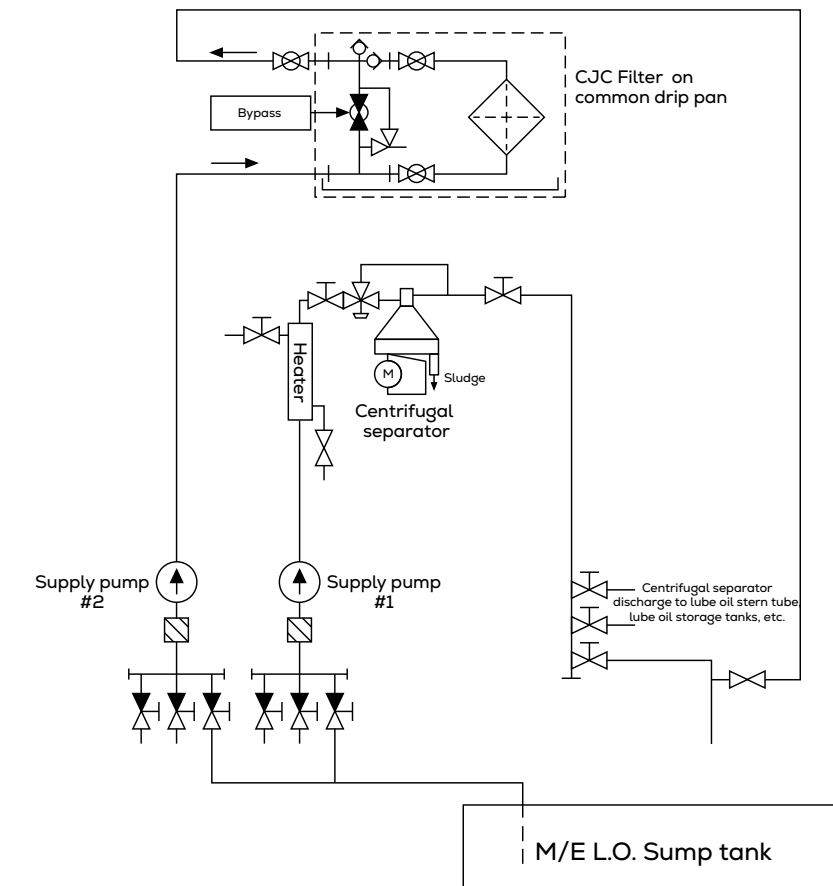
## Expected filter insert life:

- 4-stroke distillate fuel > 2,000 engine running hours
- 4-stroke residual fuel > 1,200 engine running hours
- 2-stroke HFO/MGO fuel > 2,000 engine running hours



## Installation procedure

1. Connect "T" supply and return lines onto existing centrifuge piping
2. Add power
3. Stop the centrifuge and start the C.C.JENSEN filter
4. Enjoy clean oil (no water or air required)





# Trusted by the market for over 70 years

Offline lube oil filtration

Three types of elements are designed  
for different types of engines



**MDO/MGO**  
4-stroke



**HFO**  
4-stroke



**MDO/MGO/HFO**  
2-stroke

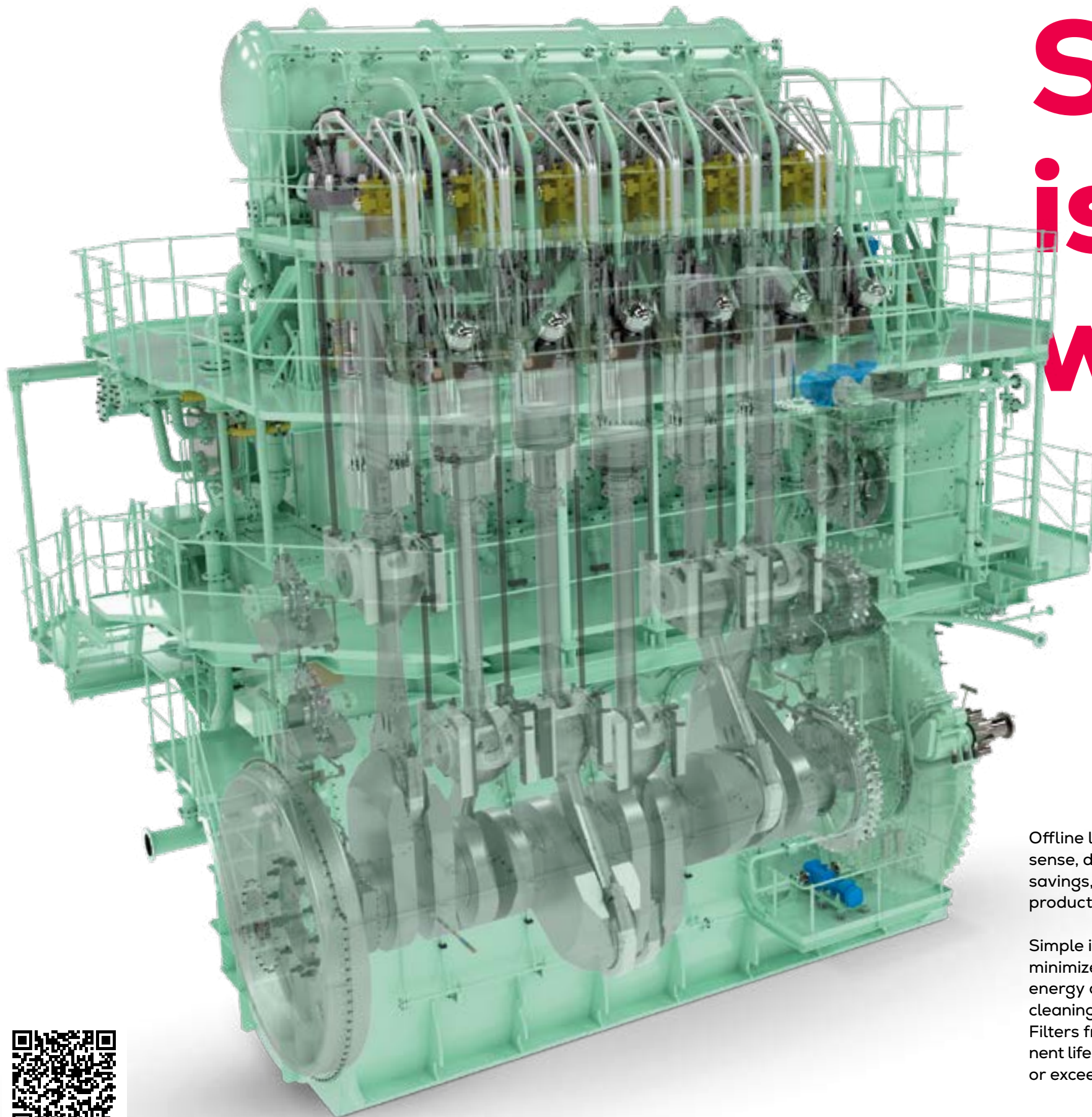
Filter element made from  
natural cellulose fibers



Variable speed drive  
maintains filtration efficiency  
as oil temperature drops

Optional  
standard drip pan





# So... is my engine worth it?

## 6-18 months

typical return on investment

Offline lube oil filtration makes sound financial sense, delivering fast ROI through significant fuel savings, lower oil consumption, and low sludge production.

Simple installation and low maintenance help to minimize running costs, while the solution's low energy consumption makes it possible to run the cleaning cycle almost 24/7/365 with 98% uptime. Filters from C.C.JENSEN extend oil and component life by 2-10 times with oil quality that matches or exceeds that of centrifugal separators.

Marine vessels generally have a high environmental footprint and there is growing pressure to reduce this. As these filtration units typically require only 3% of the fuel required by a separator, this translates into a substantial reduction in CO<sub>2</sub> emissions.

#### Our services include

- Support and advice for choosing the right filtration system
- Retrofit installations, new installations, spare parts, and replacement filter insertions with short delivery times
- Return on investment calculations to help evaluate your savings



Want to know more?





### Our service portfolio

We offer a full spectrum of services designed to keep your fleet and plants efficient, compliant, and competitive.

- **Genuine OEM spare parts:** Protect your assets with patented, high-quality components manufactured to OEM standards.
- **Long-term service agreements:** Predictable maintenance planning & cost savings tailored to your operational needs.
- **Retrofits & upgrades:** Future-proof your engines and systems for efficiency, emissions compliance, and competitive performance.
- **Technical service & field support:** 24/7 availability to ensure reliability and rapid response worldwide.
- **On-site recovery solutions:** Fast-track repairs to get your equipment back in service with minimal disruption.
- **Remote monitoring & optimization:** Digital solutions to maximize efficiency, safety, and availability of your Everllence machinery.
- **One-stop services with PrimeServ Omnicare:** Consolidate services your for engines, turbines & compressors across major marine and power brands.
- **Everllence PrimeServ Academy:** Get the best qualifications to operate and maintain your Everllence installations.



**From dock to deep  
sea and on any site  
– your trusted  
service partner**

Our global service network ensures fast response, expert support and maximum efficiency for your engines and systems – helping you stay ahead with reliability you can trust.

### We offer comprehensive service solutions:

**Sales & spare parts:** Genuine OEM parts, expert consulting, and CRM-based support to optimize availability and performance.

**Technical service & maintenance:** Precision repairs, reconditioning and lifecycle optimization for long-term efficiency.

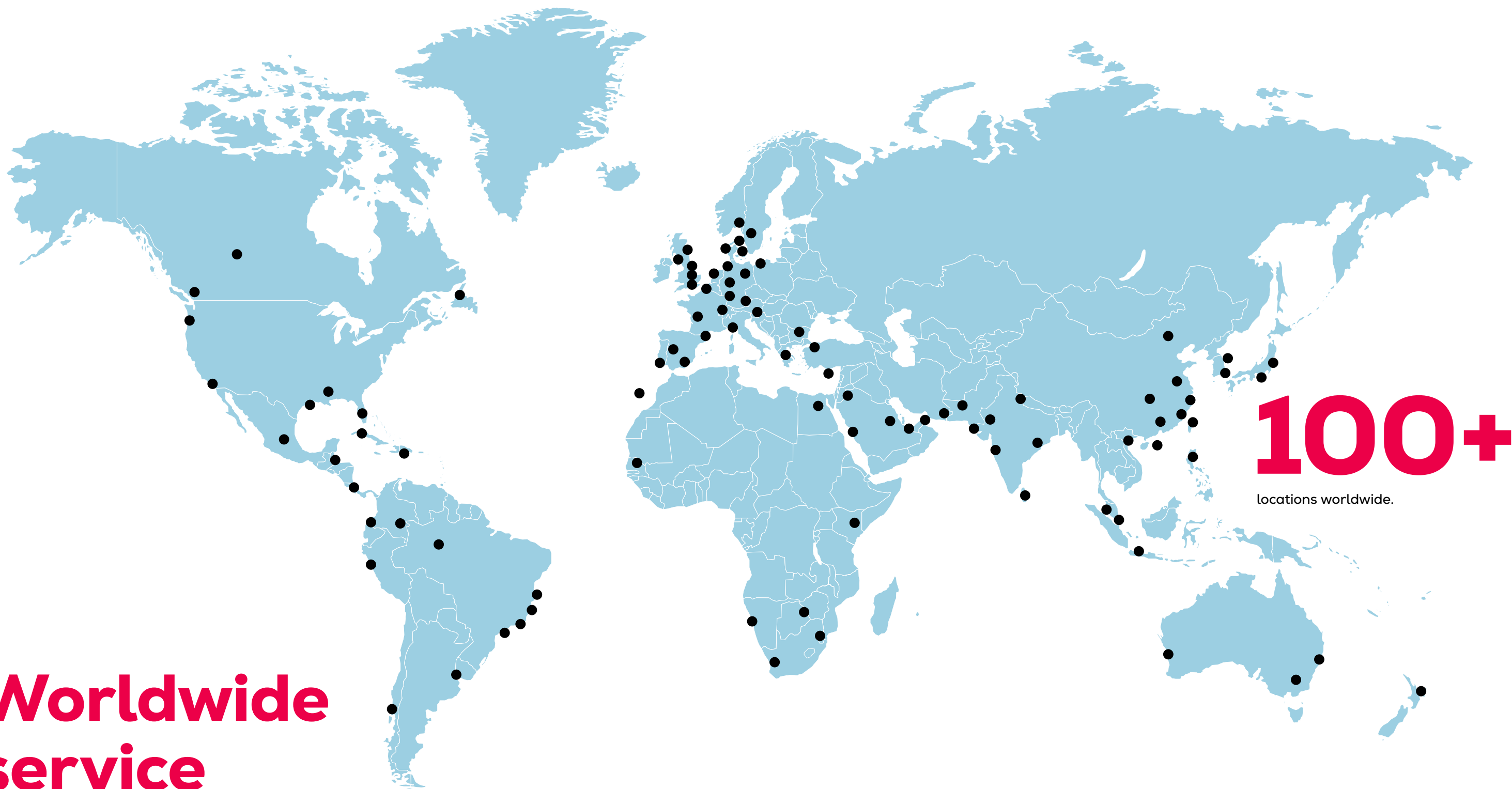
**On-site recovery & field service:** Emergency response and proactive service, wherever you need us.

# Worldwide service

We offer retrofitting and upgrade services to bring engines and turbochargers already in service up to the very latest standards of performance and efficiency.

Using the latest digital technology, we enable you to maximize the performance and availability of your Everllence equipment by accessing real-time data analysis, remote support, and rapid solutions. We also offer an extensive range of training courses at Everllence PrimeServ Academies around the world.

Armed forces must always be ready for action and so is our service team, offering continuous support, dedicated training, and fast delivery of spare parts wherever your military operations take you.





# From MAN to Everllence – Forever the only original.



## A new name. Same legacy of excellence

We've changed our name – but not who we are. MAN PrimeServ is now Everllence PrimeServ. It's a name that captures everything we've always stood for – OEM expertise, lasting commitment and world-class service.

We're not just here to maintain. We're here to elevate. With hands-on expertise, global reach and deep technical insight, we help our customers move forward with confidence – Every day, Everywhere.

Precision. Passion. Partnership. That's what defines Everllence PrimeServ. Then, now and always.

## Still the original

We are the only original equipment manufacturer for these brands:

- MAN Energy Solutions
- S.E.M.T. Pielstick
- B&W Motor
- Ruston
- Mirrlees Blackstone
- Paxman
- Sulzer Turbo
- Alpha propulsion systems





## **Everllence**

Everllence PrimeServ Omnicare Product Center  
Rivium Quadrant 75  
2909LC Capelle aan den IJssel  
The Netherlands  
[primeserv-omnicare@everllence.com](mailto:primeserv-omnicare@everllence.com)  
[www.everllence.com/omnicare](http://www.everllence.com/omnicare)

All data provided in this document is non-binding. This data serves informational purposes only and is not guaranteed in any way. Depending on the subsequent specific individual projects, the relevant data may be subject to changes and will be assessed and determined individually for each project. This will depend on the particular characteristics of each individual project, especially specific site and operational conditions.

Copyright © Everllence  
EVR000205EN-250600, GKM-CPH